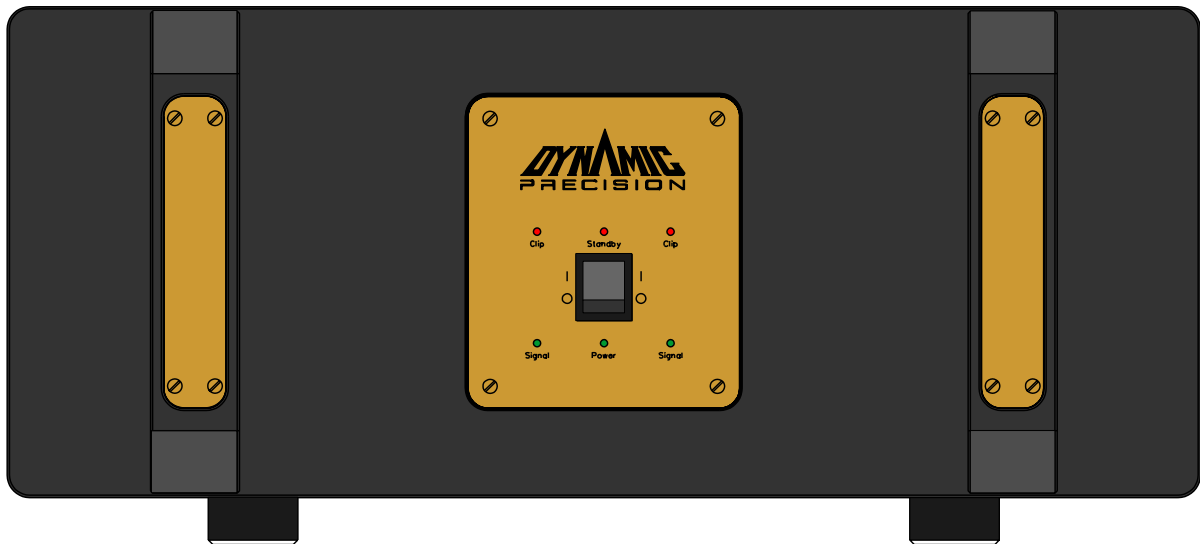


DYNAMIC PRECISION



TECHNICAL SPECIFICATIONS

STEREO POWER AMPLIFIER

DPA 6.52

TECHNICAL SPECIFICATIONS

DPA 6.52

OUTPUT POWER, RMS, 20Hz-20kHz, @ 1% THD (clipping level) :	8 Ω load, 400W per channel 4 Ω load, 800W per channel 2 Ω load, 1600W per channel 8 Ω load, 1600W bridged mono
Maximum output current:	More than 120A per channel (240A peak)
DISTORTION, THD @ 400W 20Hz-20kHz in a 4 Ω load:	Less than 0.0015%
DISTORTION, THD @ 35V RMS, 1 kHz:	Less than 0.00012%
IM DISTORTION, CCIR 13 kHz and 14 kHz, 8 Ω load:	Less than 0.0002% (typical 0.0001%)
FREQUENCY RESPONSE:	DC - 800kHz -3dB DC - 150kHz -0dB
SLEW RATE:	Greater than 500V/us
DAMPING FACTOR:	1000 @ DC - 20kHz/8 Ω
SIGNAL/NOISE RATIO, Ref. 350W/8Ω load:	10Hz-80 kHz 114dB 22Hz-22kHz 122dB 10Hz-CCIR-QPK 112dB IEC-A weighted 125dB
INPUT IMPEDANCE:	100 k Ω (100pF in parallel)
GAIN:	31,7dB (38,4X)
SENSITIVITY:	1,04 V RMS for 200W/8 Ω
CHANNEL SEPARATION:	More than 120dB@ DC -100kHz
COMMON MODE REJECTION RATIO:	Better than 100dB@ DC -100kHz
DIMENSION (W x H x D in mm):	534 x 241x 465
WEIGHT (kg):	58

*THD: Total harmonic distortion.
RMS: The Root Mean Square of a voltage.*

Dynamic Precision reserves the rights to change or alter the specifications and/or the technical solutions without prior notice.